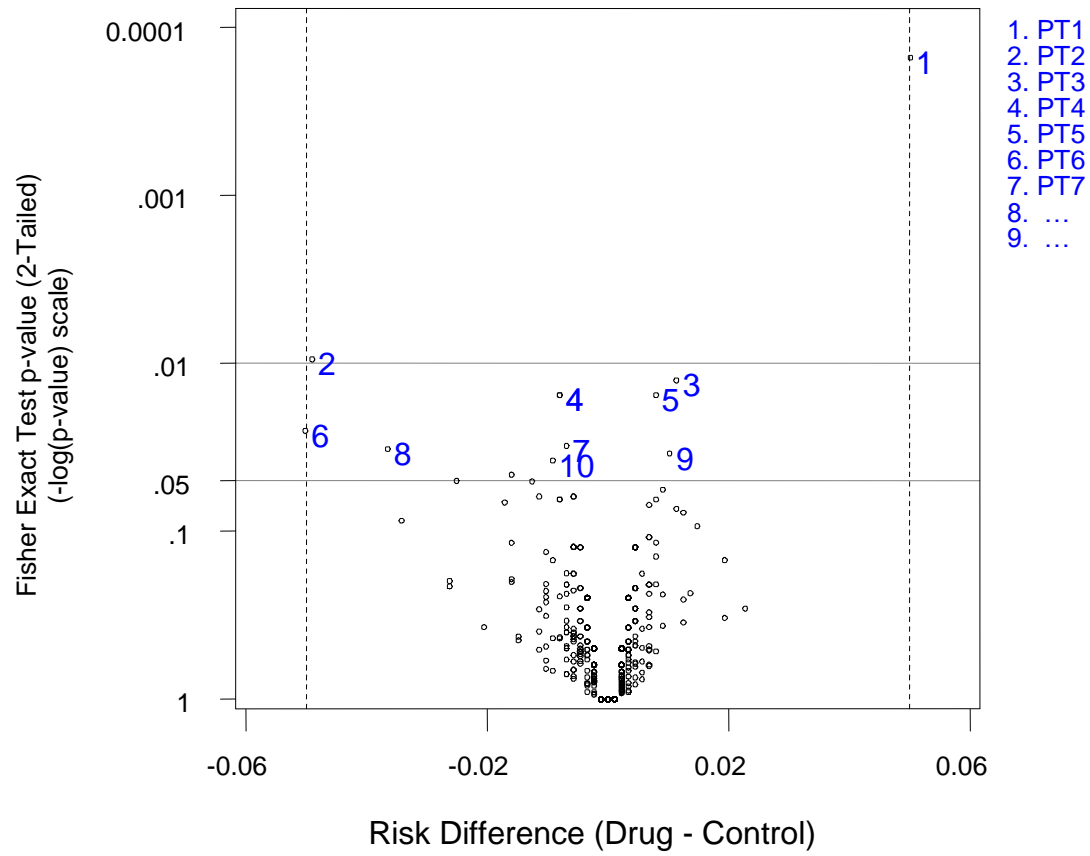
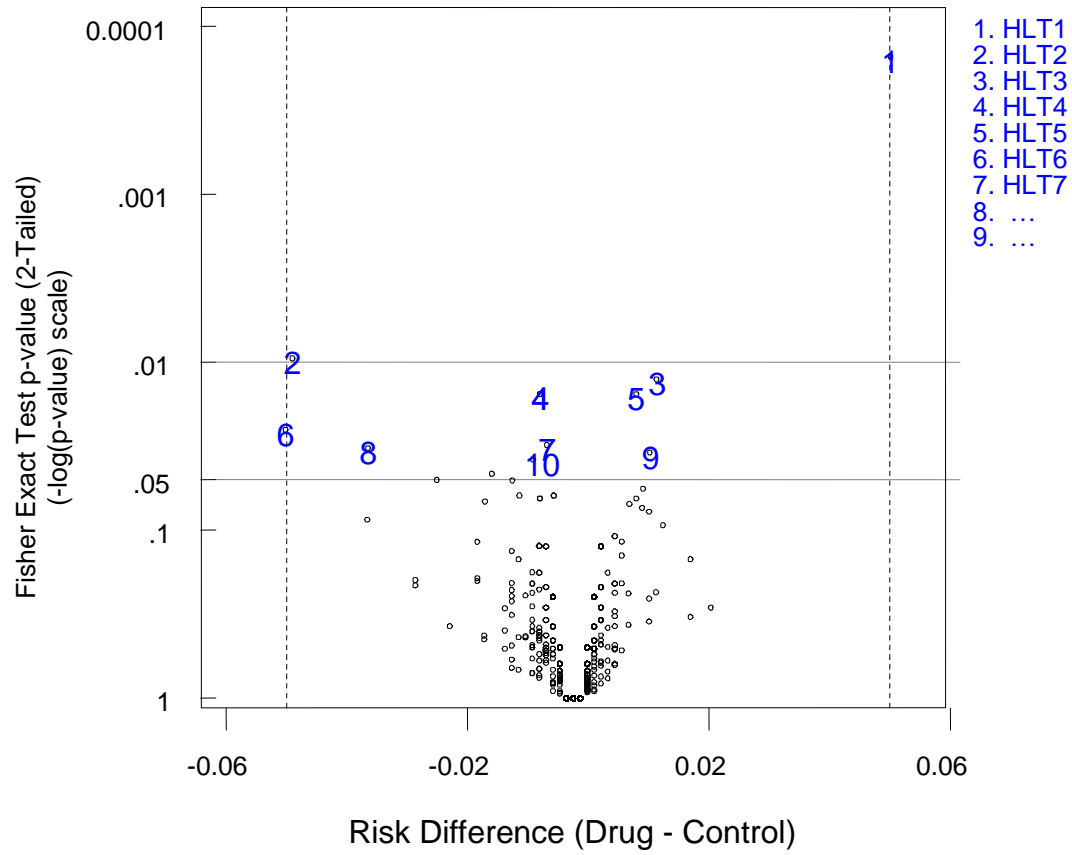


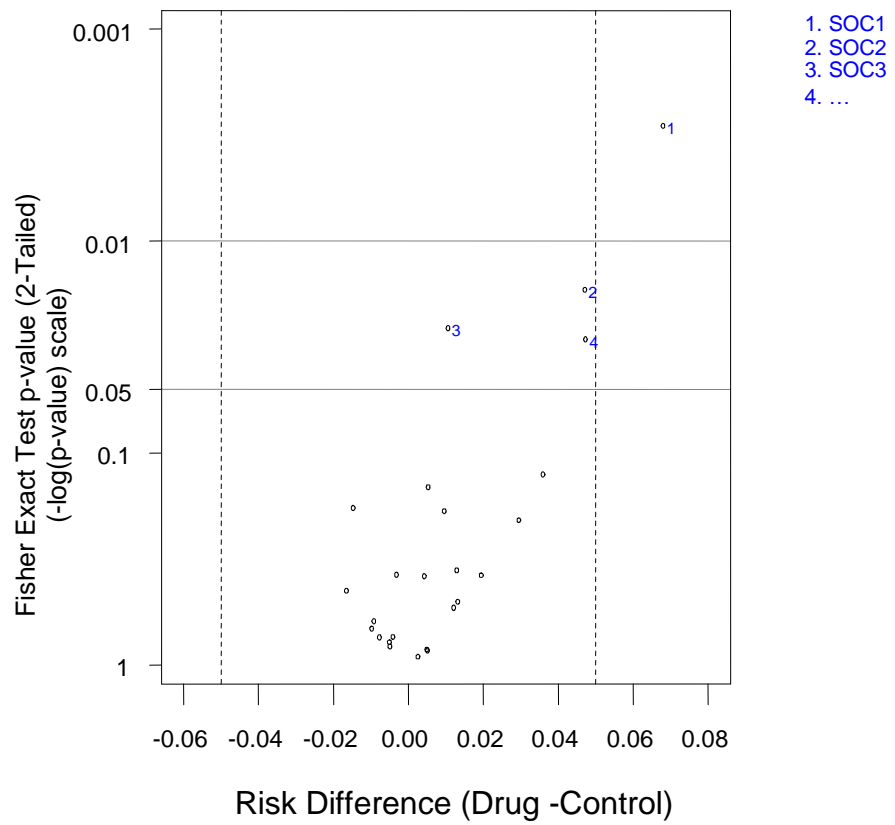
### Relationship Between Risk Difference and P-value for Adverse Events by Preferred Term



# Relationship Between Risk Difference and P-value for Adverse Events Events by High Level Term

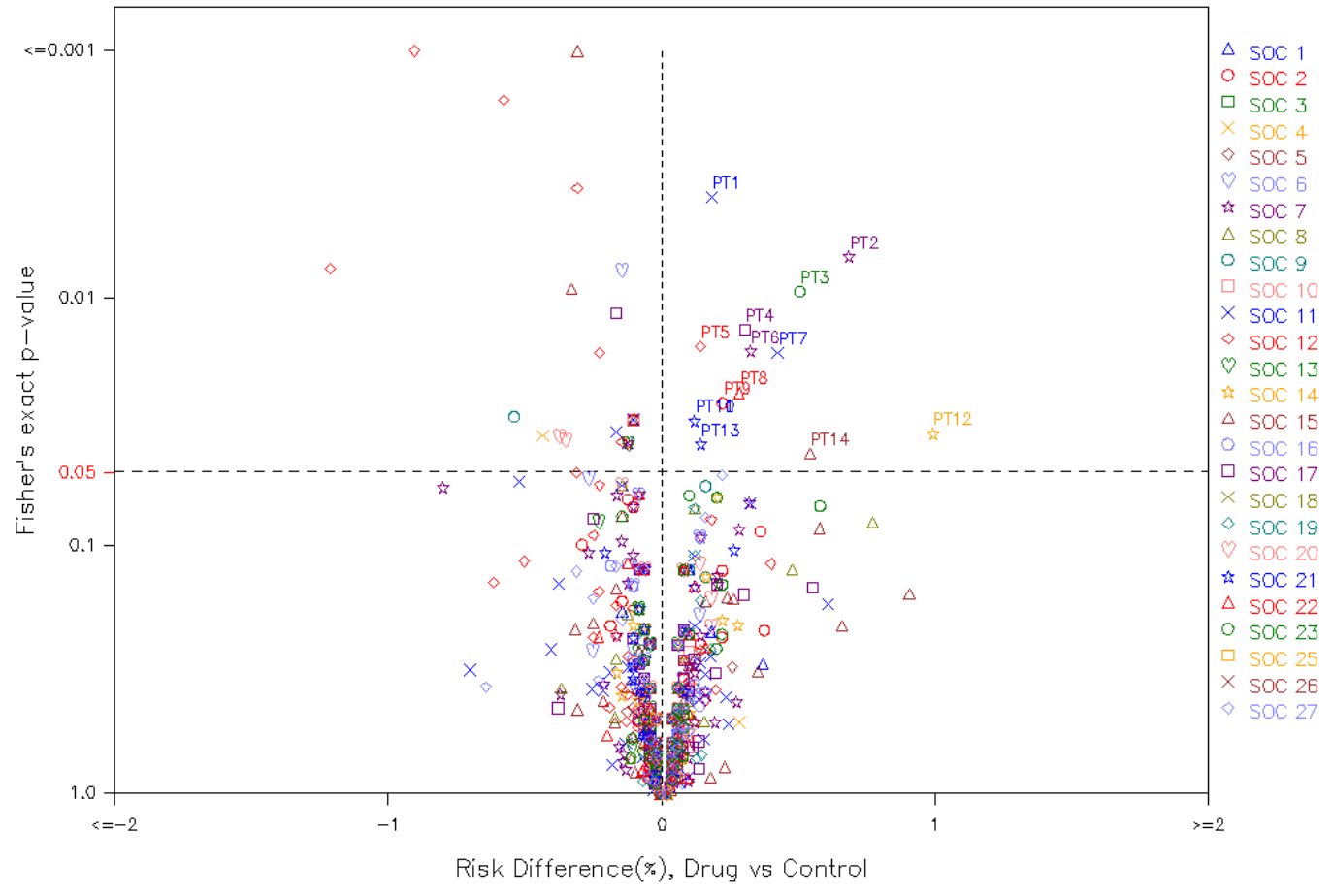


### Relationship Between Risk Difference and P-value for Adverse Events by System Organ Class

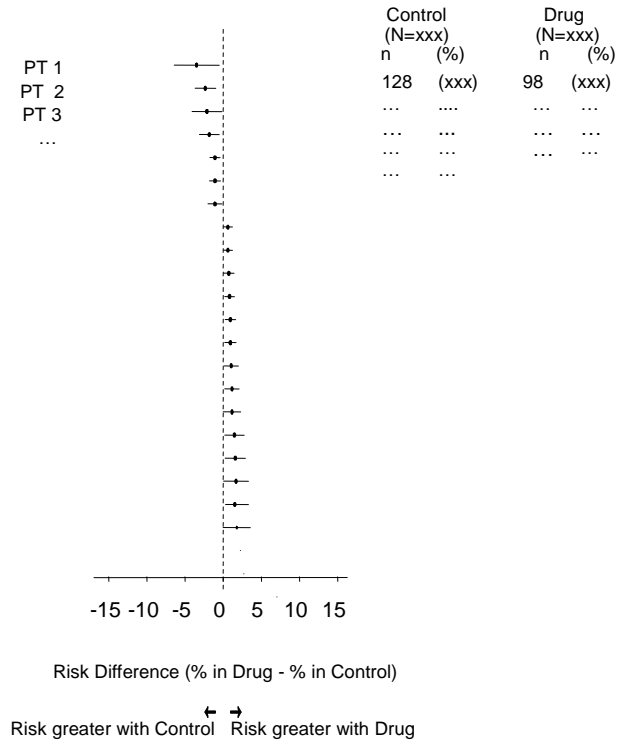


Forest Plot of

### Relationship Between Risk Difference and P-value for Adverse Events by Preferred Term/System Organ Class

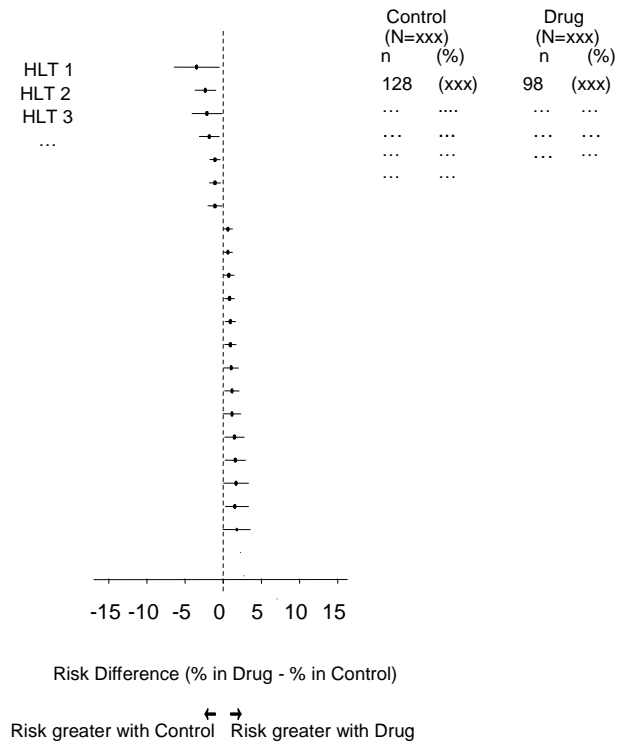


### Adverse Events with Unadjusted P-value <0.05 by Preferred Term



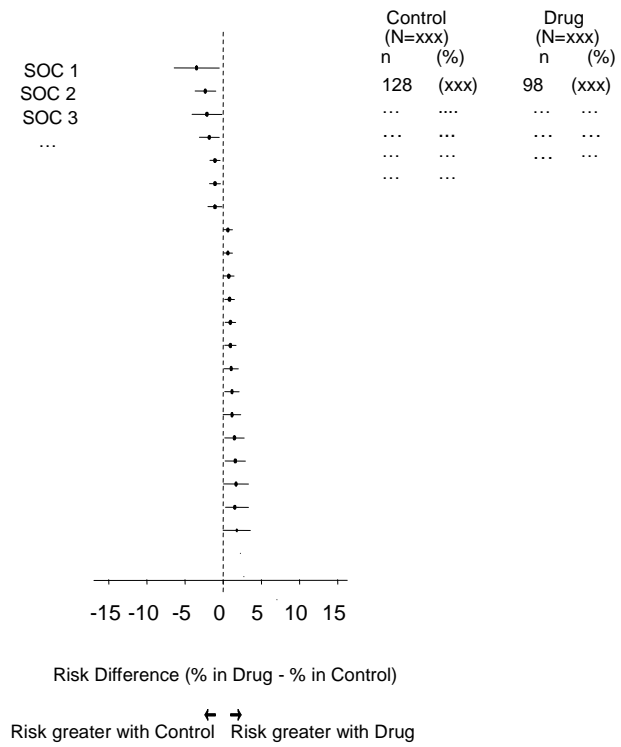
)

### Adverse Events with Unadjusted P-value <0.05 by High Level Term



)

### Adverse Events with Unadjusted P-value <0.05 by System Organ Class



)

### Forest Plot of Adverse Events with Unadjusted P-value <0.05 (Overall and Subgroup)

